


2026

GSE-7 Promotional Brochure  
Office of International Affairs



**Busan** Color your unpainted dreams  
*Chill* with us

**Institute of**



**Science and**



**Technology**

 **BIST** Busan Institute of Science and Technology

# Color your unpainted dreams, Chill with us.

Employment Is Yours! & Career Planning 04

Vision and Role 05

Campus Facilities 06

Social-Wave, An International  
Student Platform for Careers & Life 07

---

## GSE-7 Program Overview

Engineering Fields 08

Humanities Fields 11

---

## General Programs Overview (Academic Fields) 12

---

## GSE-7 International Student Employment & Settlement Roadmap 13

---

## Freshman Scholarship 14

# Color your unpainted dreams

# Chill with us

## 01 Certified as an IEQAS (International Education Quality Assurance System) University

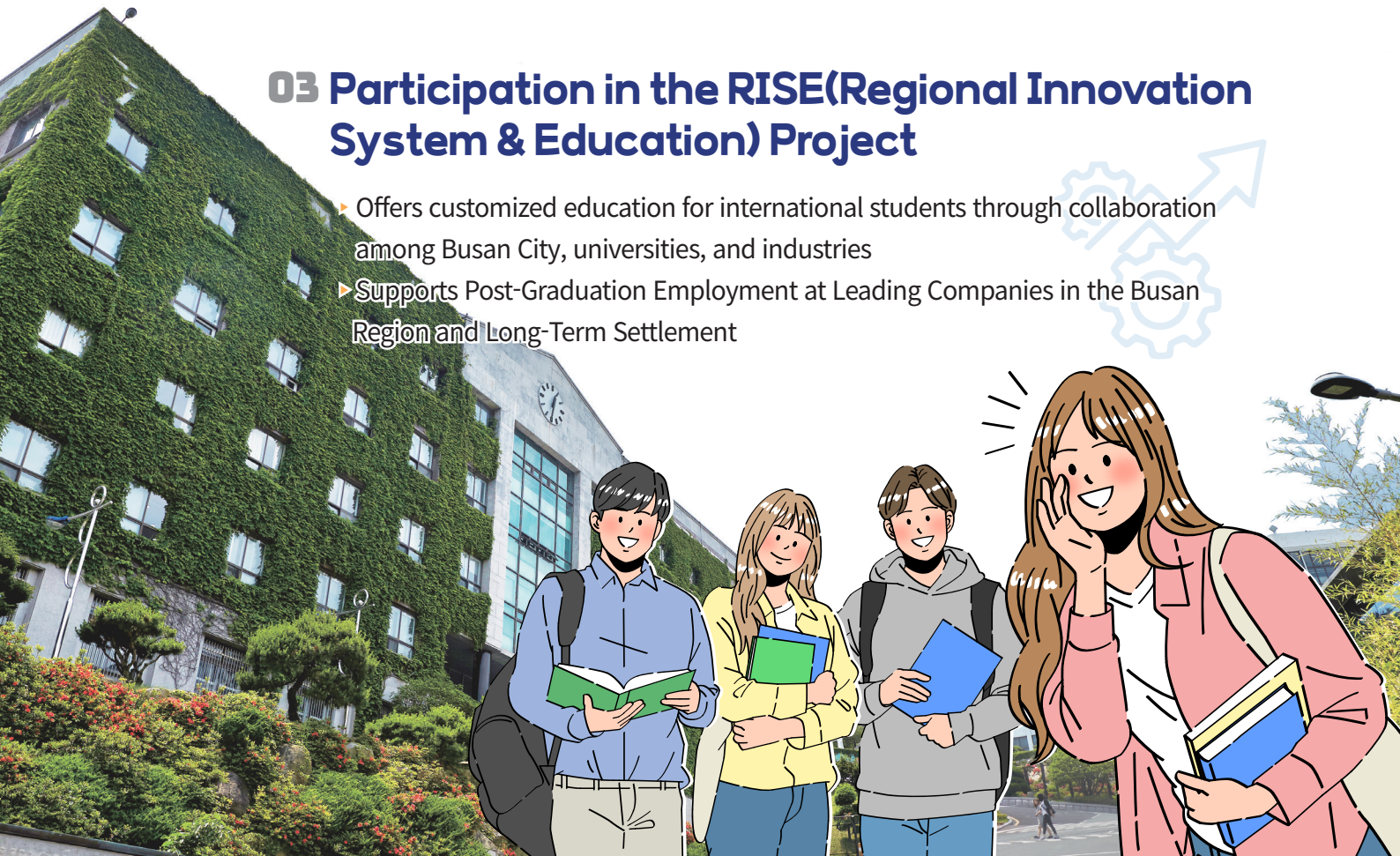
- ▶ Certified for excellence in international student management and education quality.

## 02 Designated as a Key KIIP (Korea Immigration & Integration Program) Education Institution

- ▶ Designated by the Ministry of Justice as an Official KIIP Operating Institution
- ▶ Designated by the Ministry of Justice as an Operator of the University-Linked KIIP Program (Regional Learning Center)
- ▶ Provides advantages and additional Points for Applications Related to Employment/Long-Term Residency, and Permanent Residency/Naturalization

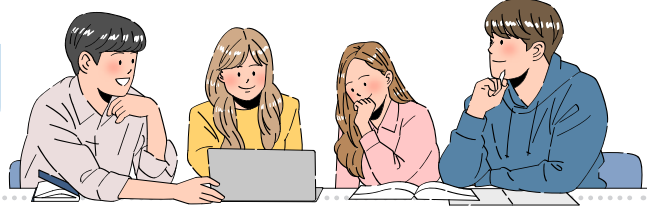
## 03 Participation in the RISE (Regional Innovation System & Education) Project

- ▶ Offers customized education for international students through collaboration among Busan City, universities, and industries
- ▶ Supports Post-Graduation Employment at Leading Companies in the Busan Region and Long-Term Settlement



# Employment Is Yours! & Career Planning

Build Your Career Strong!



- ▶ Selected for the RISE (Regional Innovation System & Education) project



- ▶ Selected for All 7 Strategic Initiatives (Highest among vocational colleges in Busan)

Practice-Oriented Talent

More Career & Startup Opportunities

Operating the GSE-7 Curriculum

Local Community Partnerships

Solving Regional Industry & Community Challenges

2025~2029 (Annual)

Approx. KRW

**4.56**

Billion

## Employment Prep Programs Focused on Success

1

**One Day Employment Support Camp**

2

**Job Catch Activity Support**

3

**Korean Language & Major Certification Programs**

4

**1:1 Resume Consulting & Mock Interviews**

## A One of a Kind Employment Support Program

Customized employment support for global talent

Employment study & 1:1 career consulting

Industry-Tailored Career Camps & Special Lectures



Career Camps for International Students



Employment Seminars with Certified Administrative Scriveners



Career exploration programs for international students

# Vision of the Office of International Affairs



## One-Stop Support

Personalized 1:1 Support  
from Entry to Daily Life

## Global Networking

A Multicultural Exchange  
Hub for Global Students

## Career Pathway

A Clear Career Pathway in  
Korea through Industry-  
Linked Education

# Role of Busan Institute of Science and Technology



# Campus Facilities



Athletic Field



Shared Kitchen



Fitness Center



Pilates room



Indoor Gymnasium



Swimming Pool



2i-ZONE



DX Academy

# Social-Wave

## An International Student Platform for Careers & Life

The RISE Project Team at BIST fosters mutual growth between local industries and global talent in Busan. BIST develops and operates a GSE-7-based career and lifelong education platform, supporting global talent throughout their settlement journey.

### 01 From Local Communities to Busan: A Global Network

#### \*Establishment of Overseas Hub Centers

BIST establishes Global Centers in countries such as Vietnam and Sri Lanka to identify and manage talented students before admission.

#### \*Operation of the GSE-7 Global Special Class

Special GSE-7 classes are designed to meet regional industry demand, providing major-specific education.

### 02 From Admission to Employment: Lifecycle Support

We provide full-cycle support covering daily life, culture, and mental health, so students can focus on their studies.

#### \*Open-Concept Global Living Room

The Project Team operates an open community lounge and study space on campus.

#### \*Settlement Support Program

We support students' settlement through cultural programs, mentoring, and counseling.

### 03 University-Region Together: Career Bridge

We provide lifelong vocational education for international students and local foreign residents to promote integration.

#### \*Employment Visa Support

We offer one-stop employment visa support through certified specialists.

#### \*Industry-Academia Network

Through MOUs with local industries, we secure clear career pathways after graduation.

#### Learn in BIST, Stay in Busan!

BIST delivers global talent to local industries, while offering international students stable careers and a fulfilling life in Busan.

## GSE-7 Programs



DEPARTMENT OF  
MECHANICAL ENGINEERING

Powered by Fourth Industrial Revolution Technologies  
A Hub for Mechanical Convergence Talent

# DEPARTMENT OF MECHANICAL ENGINEERING



### Admissions Faculty Advisors

Lee Yuk-hyung T. +82-10-4199-6913 E. yhlee@bist.ac.kr  
Jin Cheol-ho T. +82-10-9490-4849 E. jchho71@bist.ac.kr  
Yang Jae-yong T. +82-10-9535-1715 E. jyyang@bist.ac.kr  
Park Seong-hee T. +82-10-4542-1714 E. parksh@bist.ac.kr

🏠 Location | Automobile Engineering Building

☎️ Tel | +82-51-330-7361

📠 Fax | +82-51-330-7221



## Department Overview

A Leader in Next-Generation Mechanical Convergence Technologies!

- ▶ Established in 1977, the department has produced graduates who have led major corporations and smart manufacturing industries.
- ▶ We cultivate industry-ready professionals through AI-based smart manufacturing across mechanical, aerospace, automobile, shipbuilding, and semiconductor fields.
- ▶ The department operates advanced training facilities, including AI smart factory labs, smart CAD/CAM labs, 3D design and printing labs, robotics automation labs, and precision measurement labs.



## Characteristics and Key Achievements

- ▶ Operation of the Busan-Style Advanced Smart Manufacturing Workforce Program (Busan City / Ministry of Trade, Industry and Resources) (2022–Present)
- ▶ Establishment and Operation of the GQE Major under the LINC+ Project (2022–Present)
- ▶ Operation of the Busan Smart Factory Expert Training Program (Busan City / Machinery Industry Cooperative) (2016–2021)



## Career Paths After Graduation

- ▶ Employment opportunities at large corporations, mid-sized companies, and public institutions
- ▶ Students may transfer to four-year universities or earn a bachelor's degree through the department's advanced major program.
- ▶ Graduates have advanced to leading companies including POSCO, Samsung SDI, Hyundai Motor Company, Korea Aerospace Industries, LG Chem, and Dongkuk Steel.



## Specialization & Outcomes

- ▶ New technology education through AI-based smart factory specialization
- ▶ Smart Manufacturing CNC & CAD/CAM Labs / Metaverse-Based Education
- ▶ Level 2 & 3 Certification Training and Testing for Smart Manufacturing Experts



## External Project Participation

- ▶ Busan Smart Manufacturing Advanced Workforce Training Project (2022–Present)
  - Cloud-Based Smart Manufacturing / Processing Training
- ▶ Busan Smart Factory Expert Workforce Training Project (2016–2021)
- ▶ Work–Study Dual Training Center Project (2016–Present)
- ▶ Participation in the LINC+ Project (2017–2021)
- ▶ the Ministry of Education–Supported College Innovation Support Project (2019–Present)
- ▶ Participation in the Early Employment–Based Contract Department LINC+ Project (2022–Present)
  - Operation of the GQE Program

## GSE-7 Programs



### DEPARTMENT OF AUTOMOBILE

Training Technical Professionals for  
the Future xEV Industry

# DEPARTMENT OF AUTOMOBILE

Daytime

Evening



### Admissions Faculty Advisors

Cho Seung-wan	T. +82-10-3677-1391	E. swcho@bist.ac.kr
Jin Dong-gyu	T. +82-10-5244-7215	E. jindk@bist.ac.kr
Choi Cheon-woo	T. +82-10-4563-5911	E. ccw5911@bist.ac.kr
Jeon Hwan-young	T. +82-10-3326-5744	E. jhy1970@bist.ac.kr
Kim Seong-hyeon	T. +82-10-5527-9548	E. pmi0901@bist.ac.kr
Sim Jae-jun	T. +82-10-3111-0179	E. shimjj@bist.ac.kr
Kim Chang-gyu	T. +82-10-4171-8514	E. race112@hanmail.net
Seo Byeong-seok	T. +82-10-9542-4521	E. 01095424521@hanmail.net

**Location** | Automobile Engineering Building (Building No.14), 1st Floor

**Tel** | +82-51-330-7361, 7094

**Fax** | +82-51-330-7221



## Department Overview

As autonomous driving and electrification drive the growth of the xEV market, the shortage of skilled professionals remains a challenge.

In response, the Department of Automobile provides practice-oriented education and optimal infrastructure to train highly field-ready xEV maintenance specialists.



## Characteristics and Key Achievements

### 1. Training xEV Specialist Technicians

- ▶ Automobile Engineering (Powertrain, etc.), Eco-Friendly Vehicles (xEV: HEV, PHEV, EV, FCEV, etc.), and Electric Vehicles (High-Voltage Batteries, etc.)
- ▶ Advanced automobile maintenance and diagnostic systems

### 2. Training Foreign Vehicle Maintenance Technicians

- ▶ Hands-on training through partnerships with leading foreign vehicle service centers
- ▶ Mentoring programs with alumni and industry professionals

### 3. Advanced major programs leading to a bachelor's degree (3rd-4th years)

- ▶ A career-track-based bachelor's degree expands career options and professional expertise
- ▶ Curricula for Automobile Engineer and Master Technician certifications, including EV training



## Career Paths After Graduation

### Key Career Fields

- ▶ Foreign Vehicle Service Centers
- ▶ Domestic Automobile Service Centers
- ▶ Mid- to Large- Sized Enterprises and Public Institutions



## Specialization & Outcomes

### Training Specialized Foreign Vehicle Technicians (Dedicated Foreign Vehicle Maintenance Track)

Since 2018, the Department of Automobile has trained field-ready technicians through employment-linked partnerships and hands-on programs with authorized foreign vehicle service centers.

### Ministry of Education & Local Government-Supported Workforce Projects

- ▶ Leaders in Industry-University Cooperation+ (LINC+) Project - Ministry of Education
- ▶ College Innovation Support Project (Types I-III) - Ministry of Education
- ▶ Establishment of an Advanced Technology Education Partnership with Bosch
- ▶ Established the BIST Racing Team in 2018, operating the nation's only university racing team
- ▶ KARA-accredited certified mechanic and official training programs
- ▶ HRD Korea-Designated National Technical Qualification Test Center

## GSE-7 Programs



DEPARTMENT OF  
ELECTRICAL ENGINEERING

At the Core of Industry and Energy  
Training Top-Tier Electrical Engineering Professionals

# DEPARTMENT OF ELECTRICAL ENGINEERING



### Admissions Faculty Advisors

Lee Woo-seok T. +82-10-2531-5603 E. wslee@bist.ac.kr  
Kim Cheol-ho T. +82-10-2817-5603 E. ch8kim@bist.ac.kr

🏠 Location | Central Building, 3rd Floor

☎️ Tel | +82-51-330-7063

📠 Fax | +82-51-330-7227



## Department Overview

### Electrical Engineering: A Discipline for Lifelong Career Opportunities

- ▶ Based on electrical engineering, a core technology of the 21st century, we deliver practice-oriented education to cultivate industry-ready electrical professionals.

#### Electrical Engineering

- ▶ Powers the future
- ▶ Enables modern well-being
- ▶ Essential across all industries
- ▶ High demand for electrical engineers
- ▶ Strong career prospects
- ▶ A foundation for a meaningful life
- ▶ One of the most essential technologies for humanity



## Characteristics and Key Achievements

- ▶ Rated A+ as a Top Department in the National University Department Evaluation (2000, 2004)
- ▶ Basic Workforce Training Project supported by Korea Electric Power Corporation (2004–2005)
- ▶ Specialization Project supported by the Ministry of Education (2007–2008)
- ▶ Local Industry–Commissioned Workforce Development Project (2008)
- ▶ Educational Capacity Enhancement Project (2009–2010)
- ▶ Globalization Hub College Development Project (2010–2012)
- ▶ Educational Capacity Enhancement Project (2013)
- ▶ Ministry of Education–Supported Specialized College Development Project (2014–2018)
- ▶ LINC+ Project – Electrical Facilities Design Program (2017–2021)
- ▶ College Innovation Support Project (2019–Present)



## Career Paths After Graduation

- ▶ Employment at leading corporations including Samsung and Hyundai. Private-Sector Technical Fields Technical roles in automation, broadcasting, and manufacturing. Public Institutions & Public Service Technical positions in railway corporations and public institutions.
- ▶ Transfer Opportunities to Partner Four-Year Universities: Pukyong National University, Dong-A University, and Dong-Eui University

## GSE-7 Programs



DEPARTMENT OF  
GLOBAL HOTEL MANAGEMENT

Dreams Come True!  
A Hotelier's Dream on the Global Stage

# DEPARTMENT OF GLOBAL HOTEL MANAGEMENT



### Admissions Faculty Advisors

Kang Gyeong-sim T. +82-10-5580-7245 E. [kkang@bist.ac.kr](mailto:kkang@bist.ac.kr)  
Choi Hae-su T. +82-10-9052-0912 E. [choi1267@bist.ac.kr](mailto:choi1267@bist.ac.kr)

🏠 **Location** | 1st Floor & 2nd Floor, Cheongu Building

☎️ **Tel** | +82-51-330-7267

📠 **Fax** | +82-51-330-7328



## Characteristics and Key Achievements

From 2017 to 2024, the department has implemented industry-academia cooperation projects with leading hotel brands, earning recognition for the excellence of its education.

Through government-funded projects, employment-linked programs with leading hotel companies across Korea (including Ananti Cove), and overseas internships and employment opportunities, the department cultivates field-oriented global service professionals.



## Specialization & Outcomes

- ▶ Overseas Internship & Employment Programs (2008–Present)
- ▶ Industry–Academia Cooperation & Employment with Leading Companies
- ▶ No-Exam Transfer Articulation Agreement with Dong-A University
- ▶ Ministry of Education–Supported Specialized College Development Project (2014–2018)
- ▶ LINC+ Project – Cooperative Education Program with SK Networks Walkerhill (2017–2021)
- ▶ LINC 3.0 Project – Industry-Partnered Program with SK Networks Walkerhill (2022–2024)
- ▶ Work–Study Dual System with Leading Hotel & Tourism Companies (2015–Present)
- ▶ Designated Examination Center for Bartender, Barista & Sommelier Certifications
- ▶ Certification Programs for Barista, Sommelier & Bartender



## Career Paths After Graduation

- ▶ Career paths include employment at leading luxury hotels nationwide—such as SK Networks Walkerhill and Park Hyatt Busan—as well as careers across the hospitality and tourism industries, overseas employment, and transfer to four-year universities such as Dong-A University.



## External Project Participation

**Hwang Ji-hee, Manager, SK Networks Walkerhill**

“Through field-oriented education, students gain hands-on experience, while industry hotel professionals provide practical, tailored training aligned with each student’s abilities, making this a highly effective program.”

- ▶ Training Professionals for Busan’s Tourism & MICE Industry
- ▶ A joint program with hotel professionals covering student selection, curriculum design, and employment linkage
- ▶ Flexible semesters with OJT programs at SK Networks Walkerhill and Park Hyatt Busan
- ▶ Employment English Training Program
- ▶ Job-Linked Certification Programs for Sommelier, Barista, and Bartender
- ▶ Field-Mirroring Training Facilities (guest room, food & beverage, and sommelier labs)
- ▶ Employment-Linked Partner Hotels SK Networks Walkerhill, Park Hyatt Busan, Ananti Cove, Grand Hyatt Jeju, Shinhwa World Jeju, JW Marriott Jeju

# General Programs Overview

## (Academic Fields)



My Youth, My Stage

### Natural Sciences



Nursing



Dental Hygiene



Ophthalmic Optics



Dental Technology



Barista & Dessert Business

Opening Your Dreams

### Humanities & Society



Early Childhood Education



Real Estate & Welfare Management



Police Administration



Funeral Administration & Welfare



Global Hotel Management

Shaping the Future

### Engineering Fields



Drone Construction technology



Safety & Health



Rehabilitation Exercise & Health



Computer & Digital Media

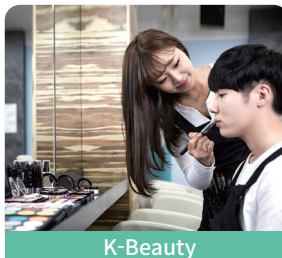


A Stage for Your Talents

### Arts & Sports



Lifestyle Design



K-Beauty



Floral Design



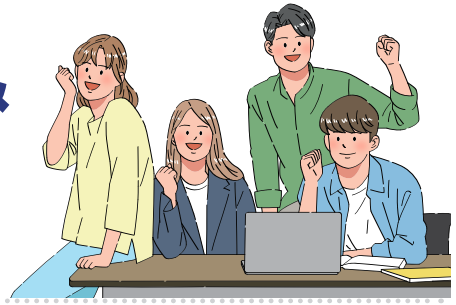
Pet & Hair Beauty



Ceramic Arts

# GSE-7 International Student Employment & Settlement Roadmap

We have a plan!



## Step. 01 Major Program

Students develop expertise through major studies and hands-on training.



## Step. 02 Korean Language Proficiency Support

TOPIK preparation classes and exam fee support (Goal: Level 3-4 before graduation)

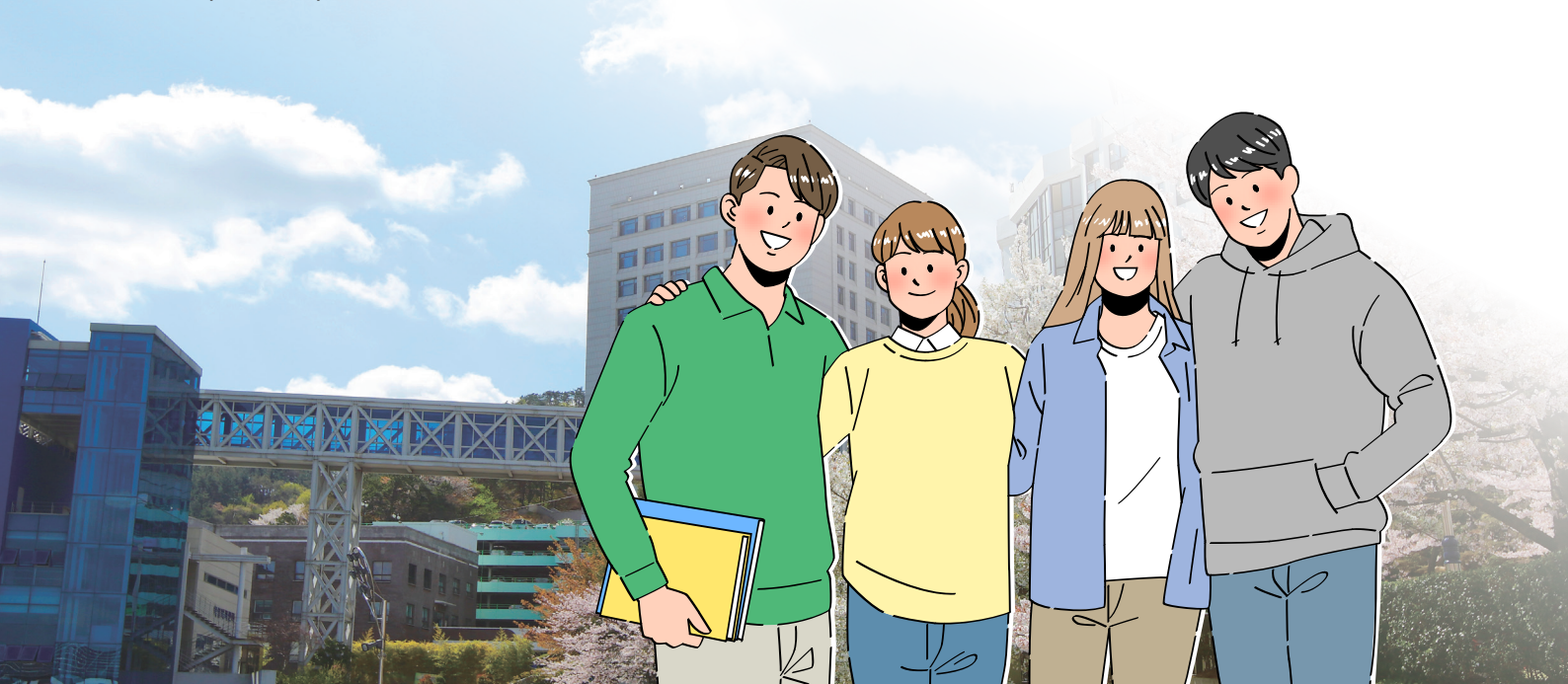


## Step. 03 Employment Competency Enhancement

Practical job training (resumes, interviews, workplace etiquette)

## Step. 04 Employment and Visa

Support for D-10 visas after graduation and transitions to E-7 / F-2-R visas through partner companies



2026 Busan Institute of Science and Technology

# Freshman Scholarship



## 1) Scholarship Programs

Scholarship	Eligibility	Amount	Documents
Major Student Scholarship	International students at BIST	11–25% of tuition (by department)	None
GSE-7 Scholarship (Per semester)	International students at BIST (D-2-1)		Certificate of Enrollment, TOPIK Score
	1. TOPIK Level 2 / KIIP Level 2+ / IELTS 5.5+	KRW 500,000	
	2. TOPIK Level 3–4 / KIIP Level 3–4+	KRW 1,000,000	
	3. TOPIK Level 5 / KIIP Level 5+	Full tuition	
Academic Excellence Scholarship	Top 10% of international student classes	10% of tuition	None

## 2) Tuition Information

Category	Amount	Remarks
Tuition	KRW 2,600,000	1 semester (6 months)
Dormitory Fees	On-campus: KRW 700,000 (2–3 person room)	1 semester (6 months)
	Off-campus: KRW 750,000 (4-person room)	
	Off-campus: KRW 820,000 (3-person room)	
	Off-campus: KRW 920,000 (1–2 person room)	
Korean Language Training Fee	KRW 1,100,000	1 semester (3 months)

## Admissions Contact Information

Office of Admissions

**Office of International Affairs, 88 Sirang-ro 132beon-gil, Buk-gu, Busan**

Tel **+82-51-330-7393, +82-51-330-7309**

E-mail **9093@go.bist.ac.kr**

A Nurturing Ground for  
Globally Competent Professionals

# BIST

[kj.bist.ac.kr/pub/main](http://kj.bist.ac.kr/pub/main)

Leading Global Professional  
**Office of  
International  
Affairs**



Scan the QR code



**BIST** Busan Institute of Science and Technology  
Office of International Affairs

Busan  
Institute of  
Science and  
Technology

## Experts Who Train Experts

 **BIST 부산과학기술대학교**

Postcode 46639 (Gupo 3-dong) 88, Sirang-ro 132beon-gil, Buk-gu, Busan, Republic of Korea

TEL +82-51-330-7273, 7274, 7293 FAX +82-51-955-3339

[www.bist.ac.kr](http://www.bist.ac.kr)